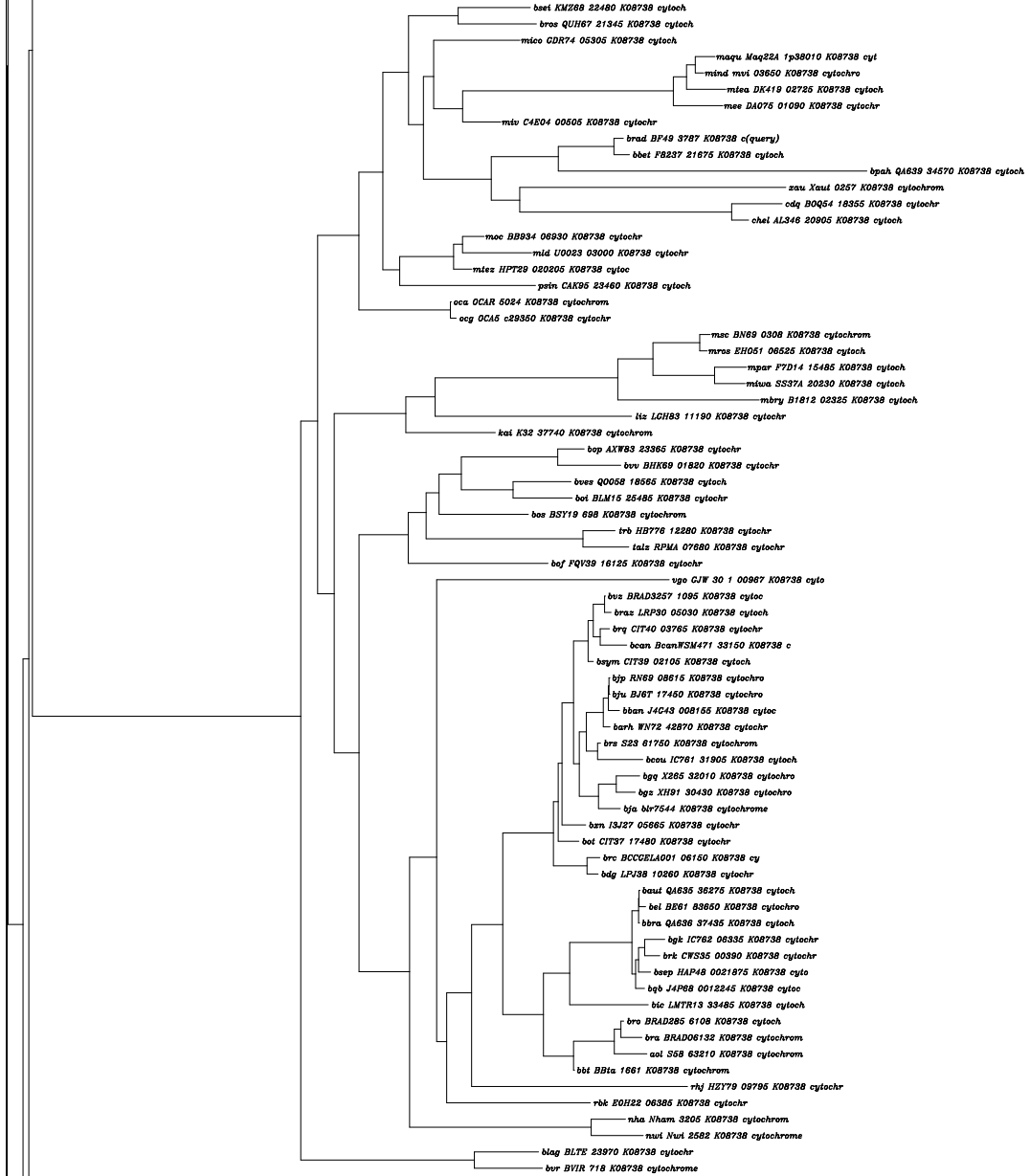


brms BM28 B0169 K08738 cytochr
brmg BM590 B0169 K08738 cytochr
baa BA13934 I100484 K08738 cy
bov BOV A0153 K08738 cytochrom
bla BR141012304 20018 K08738 c



brj BKD63 01570 K08738 cytochr
bul BF3285c2 0636 K08738 cytochr

bol BCOUA I10174 K08738 cytochr
bmi BSUIS B0177 K08738 cytochr
brms BRA0174 K08738 cytochrome
brmr BMI I1171 K08738 cytochrom
bmi BMEA B0174 K08738 cytochr
brmj BAB2 0169 K08738 cytochrom
bmel DK63 2189 K08738 cytochr
brmc BAN519 I101600 K08738 cyto
brmb Btau62 0169 K08738 cytochr
brca BCAN B0174 K08738 cytochr
brcl V910 201032 K08738 cytochr
brca V568 201203 K08738 cytochr
brca DAB5 11330 K08738 cytochr
brca DR60 3049 K08738 cytochr
babu DK53 2968 K08738 cytochr
babt DK49 2274 K08738 cytochr
baba DK51 2466 K08738 cytochr
babr D074 2280 K08738 cytochr
baba DK55 2188 K08738 cytochr
baba D078 2089 K08738 cytochr
babb DK48 2525 K08738 cytochr
brmw BMNI I10167 K08738 cytochr